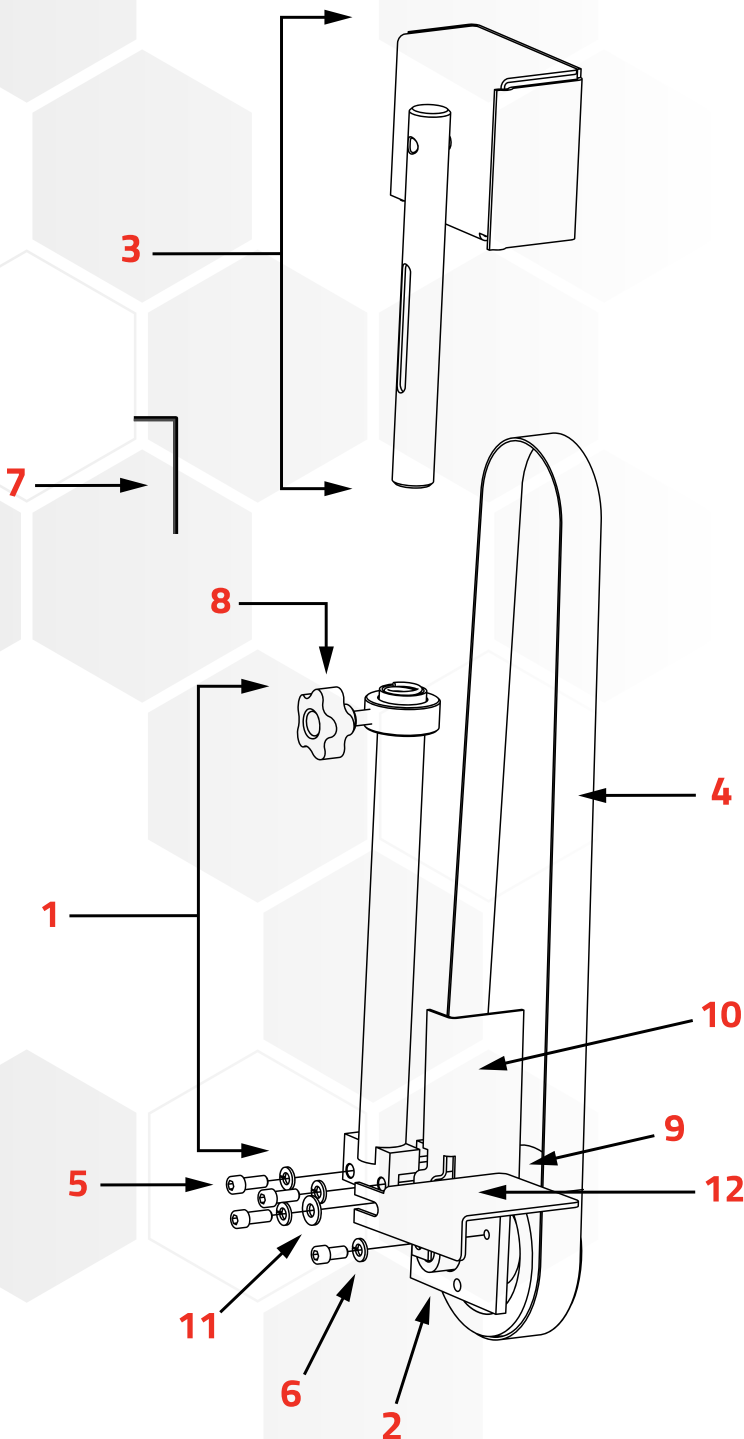


Shaft Cutting Machine

Package Contents

This package includes the following items:

1. Sanding Arm Assembly
2. Mounting Plate
3. Upper Pulley Assembly
4. Belt
5. 1/4-20 x 5/8 Cap Screw
6. Lock Washer
7. 5/32" Allen Wrench
8. Collar Locking Knob
9. Drive Pulley
10. Belt Bracket
11. Flat Washer
12. Work Table



Getting Started: Operating Instructions

STEP 1

Place **Sanding Arm Assembly(1)** on inside edge of **Mounting Plate(2)**(already attached to motor) and attach using (2) **1/4-20 x 5/8 Cap Screws(5)** and **Lock Washer(6)** with supplied **5/32" Allen Wrench**.

STEP 2

Loosen **Collar Locking Knob(8)**, install **Upper Pulley Assembly(3)** into **Sanding Arm Assembly(1)** and tighten **Collar Locking Knob(8)** with **Upper Pulley Assembly(3)** compressed in **Sanding Arm Assembly(1)** (knob should lock at top of slot).

CAUTION: Spring under compression, make sure **Collar Locking Knob(8)** is secure before releasing **Upper Pulley Assembly(3)**.

STEP 3

Install **Belt(4)** onto **Drive Pulley(9)** (already attached to motor) and idler pulley, located in the **Upper Pulley Assembly(3)**. Loosen **Collar Locking Knob(8)** to allow **Belt(4)** to tighten. With **Belt(4)** tight, rotate by hand to help center **Belt(4)**, rotate **Upper Pulley Assembly(3)** as needed. After **Belt(4)** looks centered, snug **Collar Locking Knob(8)**.

STEP 4

Install **Belt Bracket(10)** to inside of **Mounting Plate(2)** and behind front portion of **Belt(4)**. Attach with **1/4-20 x 1/2 Cap Screw(5)** and **Lock Washer(6)** in bottom mounting hole. Do not fully tighten screw. Install **1/4-20 x 5/8 Cap Screw(5)**, **Lock Washer(6)**, **Flat Washer(1)** and **Work Table(2)** to inside of **Belt Bracket(10)** at top mounting hole. Do not fully tighten screw. With light pressure, hold **Belt Bracket(10)** flush against backside of front portion of **Belt(4)** and tighten screws. Adjust **Work Table(12)** to level position that is not touching **Belt(4)**.

STEP 5

Plug the machine into outlet. Turn the unit on to test the sanding belt tracking. If additional adjustment is needed, loosen the **Collar Locking Knob(8)** and turn the **Upper Pulley Assembly(3)** right or left to center the **Belt(4)**. Re-tighten the **Collar Locking Knob(8)**.

NOTE: Be Careful not to touch the **Belt(4)** while the unit is running.

In Addition

- It is recommended that motor be mounted to workbench using (2) two 1/4"-20 bolts & nuts (not included).

NOTE: Always wear safety glasses when operating.